

Motueka Tramping Club Newsletter January 2023



Email: secretary.motuekatc@gmail.com Web site: www.motuekatrampingclub.org



Wishing you, for 2023, heaps of adventures - tramping in the bush, the mountains, and for some, the lakes and sea. Stay safe and have fun



President's Prose

Nelson Anniversary, Waitangi, and Easter Weekends – all good opportunities for us to celebrate who we are. For those who have achieved the reward of retirement, these weekends may not mean as much, but often they are the time when family members can come to visit.

So also a great time to get out and share our passion for walking in the outdoors with younger generations. And if they can't possibly leave their cellphones at home, then encourage them to take photos and find out about objects they discover when they return home, or install an app so they can track their journey.

Once you have done these outings as a warm-up, you can have a bonus Tramping Club weekend, as post-long-weekend walks to Salisbury Lodge and Kahurangi Lighthouse are planned to wisely not coincide with the long breaks; St James (or similar) is planned pre-Easter so there will be stories to share with and enthuse the youngsters.

Happy tramping all.

Heather

We welcome our new members:


Sjors, Sue, Murray, Maike



Trip Reports



4 September Wainui – Evans Ridge Circuit

	E ddie the excellent driver V ast landscape A marzing view N ew boots S hiny snail shell	
W eka A nnoying stile at carpark I deas N ew friend U phill I nternational backgrounds		R iver crossing I ntentions book - soggy D iscussion G rey warbler E xperience
	C old wind I nspirational R ough root-ey route C oncentration U ndulating I ntimidating incline T ree roots	

Heather (who designed this very smart report) for Christine, Sonia, Ann and Eddie.

11-12 September Rocks Hut – Cancelled due weather

18 September Waimarama Sanctuary Circuit

We headed to Waimarama Sanctuary about 10.20am to explore this 700-hectare area. We were all surprised as the further we walked in, the more beautiful it got, with crystal clear streams, ancient trees and undisturbed bird life.

Starting at the big dam near the entrance, we crossed over to the loop track and headed up the valley. Points of interest along the way were the weta hotels and two old dams.

History – This valley was part of the water catchment area that fed water to Nelson, constructed around 1868. There was a time when some of the land was leased to RW Jenkins for coal mining, with two mines near the waterworks reserve on the western side of the brook stream. The lease was then surrendered on 20 May 1902. This sanctuary is the largest fenced sanctuary in the South Island and the second largest in the country, established in 2014. It is the only sanctuary to have a mature beech forest. The predator proof fence was constructed in 2016, at a cost of \$4.2 million and introduced mammalian pests were eradicated from the sanctuary by 2017. There are plans to reintroduce Okarito kiwi and tuatara.



Continuing on up after checking out the various dams, we attempted the track up to forks crossing but we couldn't find an easy way to cross the stream over to the valley track. It's worth checking out this area though as we walked along concrete sections that housed the pipes once used for water transfer down the valley. After that detour we retraced our steps a bit and, after morning tea by the stream, we headed up the steep direct Jacobs

ladder. This track zig zags through regenerating bush. We passed the twins, two very old wide girthed trees, one rimu and one matai that thankfully had escaped logging. We had lunch at a huge table by the stream at the northern end of the bold bach track. During lunch we were entertained by a robin who danced and posed on the table amongst the lunch boxes.

After lunch we checked out the crystal-clear champagne pool, the swimmers noting that for summer. All of the streams we followed or crossed were crystal clear and there are quite a few crossings on Carter's track. We followed this to the end and crossed over and headed back down the valley on the other side of Carter's track taking the easier/longer Koru track

back down to the cars. In the winter months there are glow worm tours which could be of interest to club members.

A great day that finished up about 2.30 with impending rain clouds. Participants were Yvonne H, Debbie, Eddie, Anne, Sarah Sm, and me Sonya L (trip leader).

(Photos: Sonya)

25-26 September (Not Anchorage) but Bushline

Planning for this trip was impacted by the death of Queen Elizabeth II. Initially the trip was to start on the Sunday and out on the Monday. Then Monday became a public holiday and Anchorage hut was fully booked on Sunday night as everyone else took advantage of another long weekend.



So on Monday Ann and I set off as a select group of 2 for this tramp.

We had a stop in St Arnaud for morning coffee before setting off up Paddy's Track. It was a pleasant walk up with as many stops as were needed to catch our breath, admire the spectacular views, chat to people on their way out, inspect the fault line and check for any interesting flora.

We arrived at the hut for a late lunch. Ann visited the deer hunters hut and the residents there. I settled into the hut and got the fire going eventually. It was a quiet night at the hut with no other visitors.

Departure was a very leisurely affair, arriving back at Lake Rotoiti via Pinchgut track in time for lunch and return to Motueka. Thank you Ann for your company. Debbie

(no photos available, so Ed supplied this photo of Queen Elizabeth)

2 October Cloustons Mine - Cancelled due weather

8-10 October St Arnaud Day walks



Day 1 - Saturday

Six of us, Yvonne H, Yvonne J, Sarah, Debbie, Ann and Judy set off on Saturday morning for day 1 of our 3 day weekend. Our first walk was to Red Hills Hut. It was interesting to see the network of bike and walking tracks that have been developed at the beginning of this walk.

We walked for about 20 minutes before stopping at a truly bucolic and very NZ scene for morning tea. The bush opened onto lush



green paddocks looking down the valley with sheep, an old cobb cottage, old wooden farmhouse and shearing shed.

Then it was onwards and upwards stopping for magnificent views of the Wairau Valley before getting to the hut for lunch. We had interesting discussions with hunters there, one of whom was an engineer on the Waimea dam which started a whole new discussion.

Then it was down again with another stop at our bucolic spot for afternoon

tea.

Yvonne J had secured a very comfortable house in the village and a very pleasant evening was had by all with the fire going.

Debbie

(Photos: Judy (Cobb building) , YH (stream crossing))

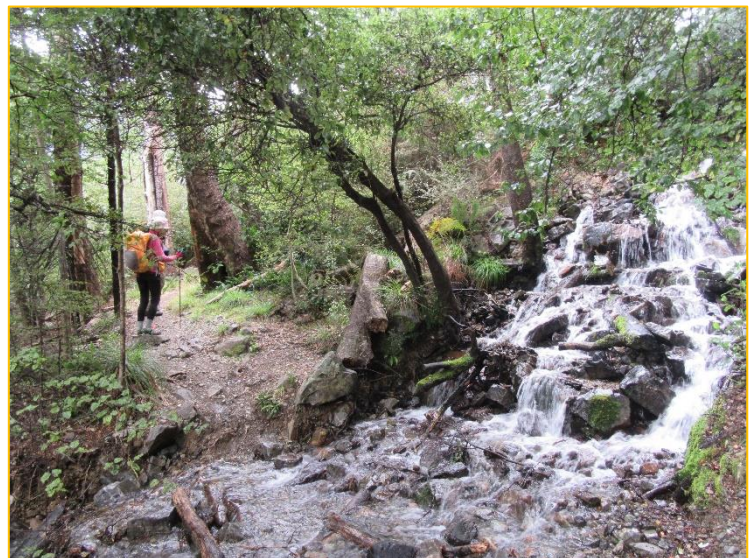


Day 2 Sunday Lakeside Track

Sunday dawned a little cool and cloudy as we parked at the lower Mt Robert car park to begin our walk along the lakeside. The track was fairly easy-going for the first few km, but became a little more technical as we came to a series of stream crossings. One of our party with an aversion to wet feet was determined to rock hop her way through, but eventually succumbed and realised it wasn't such a terrible experience. We reached Whisky Falls in time for

morning tea, and were quite impressed by the volume of water cascading down, one of the few advantages of our wet winter.

Being school holidays we met a few youngsters along the track including a plucky lady with a tramping pack on her back, a four-year old boy on her shoulders and hand carrying another smaller pack. Her six year old was skipping along ahead. She said they had all spent the previous night at Coldwater hut and were



heading back to Christchurch over the next few days.

By lunchtime we reached Coldwater Hut at the end of the lake, enjoying the view from inside the hut rather than share our lunch with the multitude of sandflies outside. We passed the time of day with some people who had come up the easy way by boat just for a picnic with their English visitors, before retracing our steps back to the village. Judy

(Photos: Judy)



Day 3 Monday Anglers Walk

After giving the house a clean we found the Black Valley Walkway which took us down to the lake. The stream had cut through deposits of rubble dumped by past glaciers. We then retraced our steps part way to the turn off to the Chapel which is a lovely wooden building with an amazing view up the lake. From there we had a stop at the DOC centre to pick up a map of local walks and have a look around at the very informative displays. On the way

back to the cars an interesting garden was spotted with various statues etc that needs to be explored another time if possible.

Of course we then had to have a coffee at Alpine Lodge before our next excursion. We drove to West Bay and then proceeded along the Anglers Walk to the bridge on State highway 63 and on returning took the Moraine walk back to the cars.

A very nice way to end our stay at St Arnaud with pleasant company of Sarah, Judy, Yvonne H, Debbie, Ann and a big thank you to Yvonne J for organising such a great weekend. Ann

(photo: Anglers walk - Ann)

16 October Puppu Hydro Walk and Rawhiti Caves, Wainui Falls

Ann, Christine, Debbie, Eddie, Heather, Marie, Sonia and me, Yvonne H. were the happy participants on these very pleasant Takaka walks on another lovely springlike day.

Pupu Hydro Walkway

A loop of 5.7km with about 182m elevation and took about 50 minutes to do the circuit. The gravel track follows an old gold mining water race. The water race was built in 1901-1902 for gold mining which stopped in about 1910 and the workings were abandoned.

In 1929 a small hydroelectric power station was built using about half of the existing water



races. It stopped generating in 1981 when a fault developed. In 1987 it was started again by Pupu Hydro Restoration Society and set up for visitors to see the station operating.

An easy and interesting walk with good bird life and varied vegetation. We also saw a few koura in the water races. The bridge at the intake is worth seeing. A great track for visitors to the area.

Rawhiti Cave

The track is steep, old and worn. The rope that used to be there has been removed and we were not sure if the track had been changed or if it was decided people could do without it. Perhaps it just fell down and never got replaced.

The cave is said to be “possibly the most diverse and extensive entrance and twilight zone flora of any cave in NZ.” And to have the largest entrance of any NZ cave.



The flora in the calcium based stalactites on the cave ceiling is very distinctive and grows outwards towards the sunlight. They are known as “biokarst features” or “phytokarst formations”.

Although all of us except Heather had been to the cave before it is indeed still an impressive experience to walk into.

Yvonne H

(Photos: YH)

23 October North Branch of the Graham River



It was a case of fifth time lucky for the trip up the North branch of the Graham. We were a small group, so parking wasn't much of a problem, though the 4wd's had to cross a ford. We made our way up to the end of the road before climbing the gate onto the property. The farm has a stunning location being just below Mt Crusader.

We had morning tea at the sheds before continuing up the valley. Then we started the 600m zig zag climb, which was relentless! There was some beautiful clematis and we also saw quite a few wild goats.

At the saddle there were magnificent views of Tasman Bay, the St Arnaud range and over to Mt Arthur and Sugarloaf. We could see huge numbers of cars at the Ngatimoti festival. There wasn't a cloud in the sky so it was a perfect day for the two prospective members!



Lunch was at the top overlooking Crusader and there was a very new 4wd track which some of the members went to investigate. On it there were two building sites, apparently future bach sites, both of which had fantastic views!

We returned the same way. It seemed so easy!

All in all, an excellent day out,

Thank you to participants Sonya, Sonia, Arif, Ann, Sarah S, Debbie and new prospective members Sue and Murray.

Moppie

(Photo: Sonya)

29-31 October Cobb Hostel – cancelled due weather, and replaced with:

30 October Holyoake Clearing

A group of trampers decided to scale the heights to Holyoake Clearing in place of Cobb Hostel. There were a couple of small slips that had to be navigated along the track but no problem to us. A Kea was spotted flying off towards Marahau, a few warblers were heard and a few Korimako Bellbirds also. A very bright orange fungi growing on wood was spotted. Greenhood Orchids *Pterostylis* were just starting to flower and the Sun Orchids were putting up their long stems.

There were wonderful views over the bay from the top of the hill and quite a number of other trampers out enjoying the day. However, the most interesting view was the NAKED TRAMPER who was very polite and used his hat for discretion and thankfully did not join us for lunch. Sorry no photo.

We did have a very cheeky Weka join us at lunch who was very determined to get food for its young one.

It was a sunny and very warm day and Sonya enjoyed a swim at Tinline beach. The day was enjoyed by Christine, Sonya, Debbie, Yvonne H and Ann.

Ann

6 November Mt Campbell Pukeone

We had eight participants, Ann, Arif, Christine, Eddie, Judy, Sarah, Sonya and me, Yvonne H.

The walk to the top is advertised as about 9.2 km return from the locked gate. The height is 780m at the gate and 1150m at the top. The area is pretty much covered in scrub and opens to tussock further up. There are views east over Tasman Bay, west towards Tasman Bay and North to Golden Bay.

The weather was predicted as fine with light winds and that was mostly true.

Driving up Rocky Road was pretty steep in places and four wheel drive vehicles with high clearance are required but it was not too slippery as it had been dry for several days before our trip.



We left Motueka at 9am, left the parked cars at 9.45am, and were back in Motueka at 3.15. So a very comfortable day trip.

We split into 2 divisions:
1. the fit and in training for even steeper stuff group, and
2. the just need to get there and back group. The fit group parked further down the road and walked up from the skid site adding about an extra 1km to their climb so when they caught up we all walked together for a while until division

naturally happened again. We tended to ebb and flow as the groups moved forward and then waited for the others to catch up. The downhill was not so “divisive”.

We had just settled in to have our lunch on the top, with the great views, when there was a dramatic change in temperature, the cloud came over and a reasonably strong wind blew up. Hats, gloves, coats and neck thingies come out from all packs and within seconds we were all well covered and very cosy in the gloom. I was very proud and not a little relieved, that we all had the right gear with us - true trampers everyone !

We had our lunch in our well wrapped state and within minutes of finishing eating, the cloud cover and wind drifted off and the views were impressive again - we did leave a bit of the extra clothing on to make our way down, as the temperature did not quite return to its balmy earlier version.

A great local trip. Yvonne H

(Photos: YH)

13 November Waitui

The owners of the Waitui farms - Harwood and Richards - have always said "It's a beautiful place, you'll enjoy it up there" and now we've had the opportunity to understand what they meant. Huge hillsides, rocky bluffs, ancient trees, gentle streams, well-curated farm track and expansive views. The weather was favourable, and there were lambs – lots of lambs. This was the first time most of us (including me as trip leader) had walked this way; we were impressed. Track statistics courtesy of OutdoorActive:

Trip distance: 13.4 km from where we parked to the hut and return.

Trip time: 6 hours of which only 3hrs 45mins was spent "actively moving" (yes, ok, it was steep!)

Time spent going uphill: 3 hr 30 mins (including time spent "not actively moving"!)

Time spent going downhill: 2 hr

Time spent on the flat: 30 min

The 50-plus map was annotated "Big Tree".

Yes we agree - it is a big tree!

Heather *(photo: Heather)*



20 November Flora Arthur Circuit – cancelled due weather

26-28 November Kings Hut/Stone Hut Wangapeka – cancelled due weather

4 December Lodestone

A lovely day for a good walk up a steep hill for great 360 degree views. Six of us stopped at Flora Huts for morning tea before heading upwards at a good pace. We could hear Kea flying around us and they were perched at the top waiting for us. Also spotted sun orchids on our way to the top. Bell birds could be heard and a rifleman was spotted. Lunch was lazily had at the top tucked down





out of the wind. On our descent a couple of robins were seen. So much chatter in the group the trip down seemed very quick.

Thanks to Christine, Jean, Sally, Meike (new) and Sjors (new) for a good day out.

Ann

(Photos: Jean)

11-13 December Fenella Hut

When the trip list was planned the dates were chosen to miss school holidays and the weekend, hoping to find spaces in the huts, and even having the huts to ourselves, and indeed huts to ourselves we had.

When we stopped at Chaffey Hut all three of us thought it so delightful that we wanted to stay. We also noted in the intentions book that others were on their way to Fenella for the night, and there were three bed and three of us - It just had to be the right choice.



Others on the track also conspired for us to have sole residency in Fenella Hut. On the way out we meet a couple, also on their way out, who said they had stayed at Cobb Hut. They told us they were headed for Fenella but saw smoke coming from the chimney and decided to stay at Cobb. They were clearly on the 'own hut' mission as well.

Staying the night at Chaffey Hut was a treat. The original hut had been built from hand cut red beech logs over 1952

and 1953 by forest ranger Jack McBurney. It was called Hannah Creek Hut and later named after Henry Chaffey who had died in August 1951. The hut was restored by the Golden Bay Deer Stalkers Association over 2012 to 2014 into a hut with 3 beds, a fireplace and a bit of space to put gear. It is rated a basic hut with no fee payable but a good secure place to put donations. It is above the river for good access to water. Sally did the water collection from the flowing river and managed to stay dry.

We all scavenged for wood - some very wet, so we left that in storage to dry out for the next people. It was the best place on the track for birds and animals - we saw a particularly colourful tui, robin, warblers, rifleman, bell birds, fantails and weka. We also saw many butterflies, as well as many sandflies. Over the river we saw a deer.



The walk to Fenella is well marked, steepish close to the hut as advertised, and generally a well maintained track. The tent camp is always worthy of a stop and wander around.

We appreciated the empty and clean hut when we arrived and had it to ourselves for the day and night.

In the afternoon we went for a walk to see the tarns/swimming holes. Sally almost went for a dip but

although she said it felt reasonably warm on the feet - when it came to the actual getting in, the water was obviously less inviting. Sarah and I could tell that from afar!!



We didn't see a great variety of flowers - probably needed other eyes, but we certainly saw a lot of *Bulbinella hookeri*, It made a great show and we have yet another photo of it to add to the many thousands online.

We also saw several of what I think are cinnabar moths, *tyria jacobaeae*. This moth was apparently imported to NZ from England to control ragwort, and although common, is in decline as the ragwort is being eradicated.

It was a great three days.

Yvonne H, Sally J and Sarah S

(Photos: YH)

18 December Christmas Party

Talk about the weather! The forecast was so changeable that I went for the indoor option. It was such a beautiful day that we thoroughly enjoyed ourselves outdoors at Yvonne J's place – thank you so much YJ. Grand tour of the grand garden, food, chat, laughter, food, coffee.... ahhh, so enjoyable, so sociable, so Christmas. Good to celebrate the season with Yvonne J, Yvonne H, Judy, Kathy, Sonya, Debbie and Ann.

Heather *(Photo: YJ)*



8 January Not Courthouse Flat BUT

8 January Hackett

As the ford to Courthouse Flats was impassable I decided to do the Hackett hut track.

It was a very warm and humid day which slowed some of us down going up the steep hill to Serpentine ridge. It was then a nice sidle along the hill to the Chromite mine which was inspected and then down hill to meet up with the track to the hut. Near the hut was a new part of the track which was very steep and rather slippery.

Lunch was had at the hut and a TA walker was very thankful of Sjors cherries. On the way back two decided to check out why there was a new part to the track and went back on the old track to find there was nothing basically wrong with it. We finally got back to the cars, having enjoyed a day out in sunshine.

Thanks to Helene, Sarah, Christine, Sjors and Yvonne H for an enjoyable day.

Ann.

Bits of history and bio-diversity:

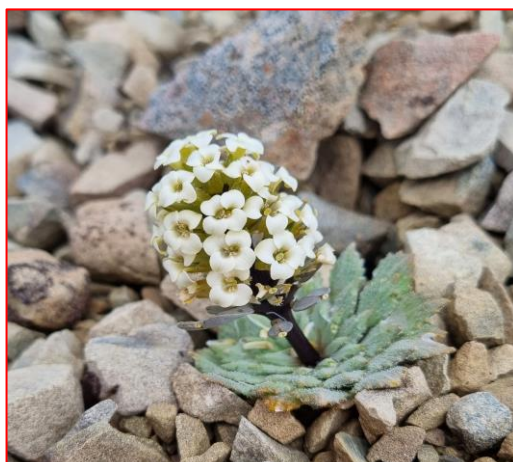
Moss and Lichens - Judy



Lichen - Ann



Droscera - Jean



Penwiper *Notothlaspi rosulatum* YJ

Editor: Yvonne J (yvonnejay@xtra.co.nz) who thanks writers for their written contributions and photographers for lovely photos